



Self Priming Centrifugal Pump

Model 16D60-QSF2.8P FT4

Size 6" x 6"

Click here
for prices
or to buy now

Total Head		Capacity Of Pump In U.S. Gallons Per Minute (GPM) At Continuous Performance				
P.S.I.	Feet					
46.8	108	210	210	210	210	210
43.4	100	330	450	450	450	450
39.0	90	390	590	720	720	720
34.7	80	430	650	790	850	900
30.3	70	460	680	830	880	980
26.0	60	485	710	860	980	1045
21.7	50	510	725	980	1010	1080
17.3	40	530	750	910	1040	1120
13.0	30	550	760	930	1055	1140
Suction Lift		25'	20'	15'	10'	5'

PUMP SPECIFICATIONS

Size: 6" x 6" (152 mm x 152 mm) NPT - Female.

Casing: Gray Iron 30.

Maximum Operating Pressure 78 psi (538 kPa)*.

Semi-Open, Three Vane Impeller: Gray Iron 30.

Handles 2 5/8" (66.5 mm) Diameter Spherical Solids.

Impeller Shaft: Alloy Steel 4150.

Replaceable Wear Plate: Carbon Steel C1015.

Removable Cover Plate: Gray Iron 30. 22 lbs. (10 kg.).

Intermediate: Gray Iron 30.

Seal Plate: Gray Iron 30.

Seal: Type 31, Mechanical, Self-Lubricated. Silicon Carbide Rotating and Stationary Faces. Fluorocarbon Elastomers (DuPont Viton® or Equivalent). Stainless Steel 316 Cage and Spring. Maximum Temperature of Liquid Pumped, 160°F (71°C).*

Seal Sleeve: Alloy Steel 4130.

Flap Valve: Buna-N w/Nylon Reinforcement and Steel.

Radial Bearing: Open Single Row Ball.

Thrust Bearing: Open Double Row Ball.

Bearing Lubrication: SAE 30 Non-Detergent Oil.

Suction Flange: Gray Iron 30.

Gaskets: Cork, Vegetable Fiber and PTFE.

Hardware: Standard Plated Steel.

Standard Equipment: Hoisting Bail. 90° Discharge Elbow. Combination Skid Base w/Fuel Tank. Strainer. Oil Level Sight Gauge.

Optional Equipment: Battery. High Speed (55 MPH/89 KM/H) Single Axle Pneumatic-Tired Wheel Kit w/w/o DOT-Approved Lights and Electric Brakes. [Tandem Axle Over-the-Road Trailer](#).

*Consult Factory for Applications Exceeding Maximum Pressure and/or Temperature Indicated.



Shown with Optional Wheel Kit



ENGINE SPECIFICATIONS

Model: Cummins QSF2.8.

EPA Tier: Final Tier 4.

Type: Four Cylinder, Four Cycle, Turbocharged, Charge Air Cooled, Liquid Cooled Diesel Engine.

Displacement: 173 Cu. In. (2.8 Liters).

Lubrication: Forced Circulation.

Air Cleaner: Dry Type.

Fuel Tank: 61 U.S. Gals. (231 Liters).

Full Load Operating Time: 31.7 Hrs.

Starter: 12V Electric.

Standard Features: Muffler w/Weather Cap.

Optional: Electronic Fuel Level Sensor.

Engine Control Features: Padlockable Box with Throttle Control, Tachometer, Coolant Temperature, Oil Pressure, Voltage and Overstart Indicators/Shut-downs. Manual/Stop Keyswitch. Fuel Level Display/Alarm/Shutdown (For Use With Optional Fuel Level Sensor).

CUMMINS PUBLISHED PERFORMANCE:

Maximum Gross Continuous BHP
74 (55 kW) @ 2500 RPM



GORMAN-RUPP PUMPS

www.grpumps.com

Specifications Subject to Change Without Notice

© Copyright Gorman-Rupp Pumps 2015

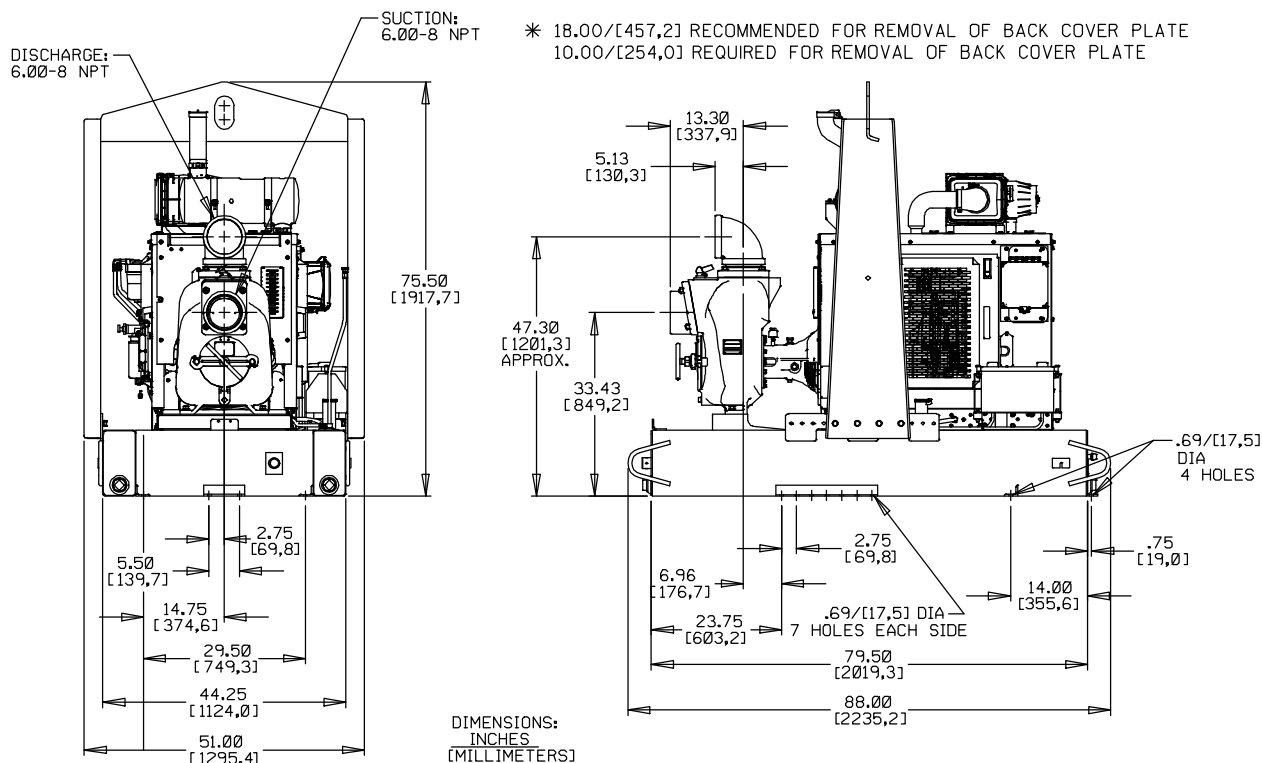


DJ Gongol & Associates, Inc.

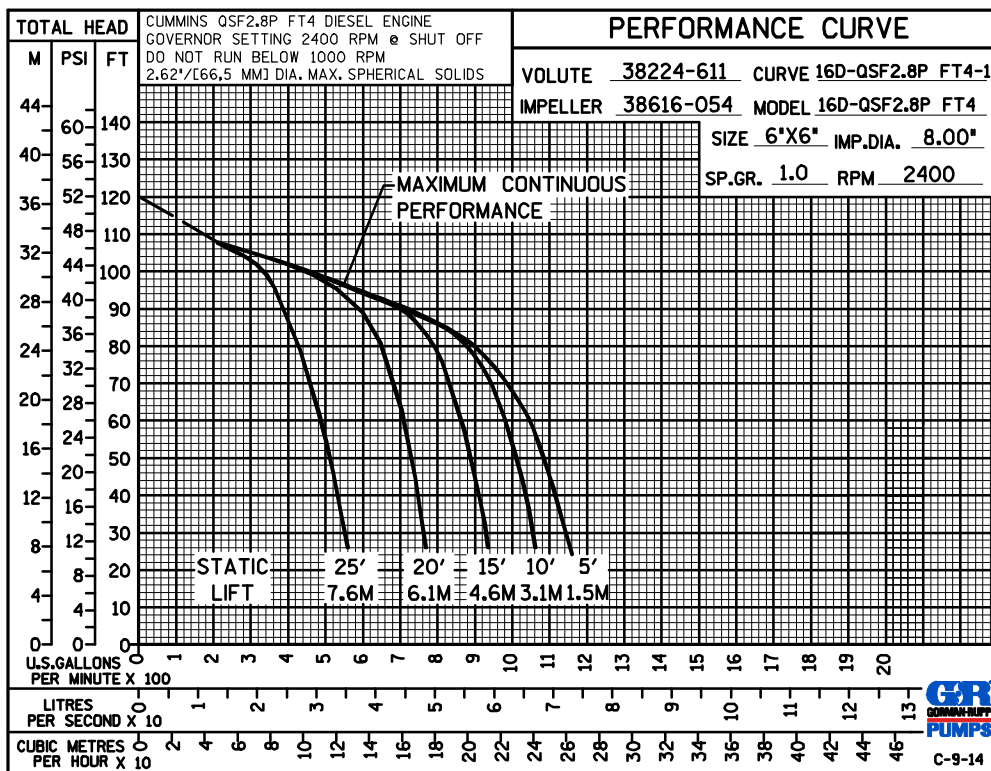
PO Box 180 | West Des Moines, IA 50061-0180
4328 North Dawson | Cumming, IA 50061
515-223-4144 | 515-981-0581 fax
info@gongol.net

SECTION 45, PAGE 1252

	SKID BASE	2-WHEEL
NET WEIGHT:	2690 LBS. [1220,2 KG.]	3050 LBS. [1383,5 KG.]
SHIPPING WEIGHTS:	2990 LBS. [1356,2 KG.]	3050 LBS. [1383,5 KG.]
EXPORT CRATE:	240 CU. FT. [6,8 CU. M.]	



POWERED BY : CUMMINS 2.8L QSF2.8P DIESEL ENGINE



GORMAN-RUPP PUMPS

www.grpumps.com

Specifications Subject to Change Without Notice



DJ Gongol & Associates, Inc.

PO Box 180 | West Des Moines, IA 5061-0180

4328 North Dawson | Cumming, IA 50061

515-223-4144 | 515-981-0581 fax

info@gongol.net