

6" Engine Driven Trash Pumps

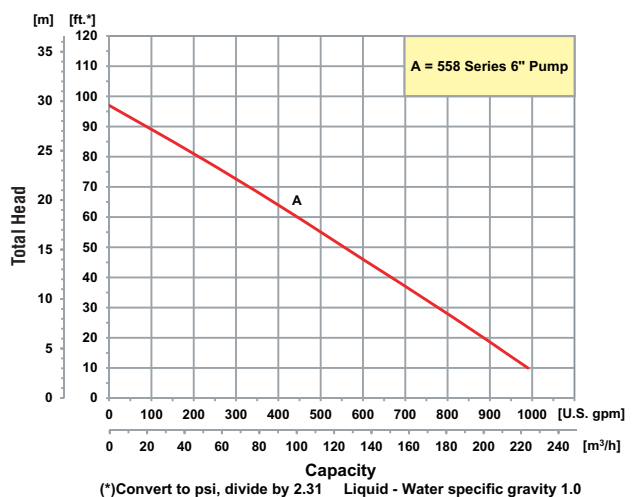
- Cast Aluminum Casing and Adapter
- Cast Iron Seal Plate, Volute and Manifold
- Stainless Steel Impeller
- Silicon Carbide Mechanical Seal and Buna-N O-Rings and Check Valve
- 6" NPT Port Size
- Self-Priming to 20 Feet
- Engine Options: Honda V-Twin or Briggs & Stratton Vanguard V-Twin Gasoline Engines or Yanmar Diesel Engine
- Maximum Solids Handling 3"
- Patented Unique Slide Mechanism Permits Complete Service of Pump Without Removing Hoses or Removing Pump Components from Trailer
- Seal Wash Feature for Extended Seal Life

Diesel Driven Trash Pump

The AMT 6" Engine Driven Trash Pump is designed for applications requiring high volume flow and solid/debris handling capabilities. Pump is constructed of heavy duty sand cast aluminum with cast iron and stainless steel internal parts for wear resistance and durability. **Patented built-in slide mechanism** features nylon and powder coated steel components that permit servicing, repairing and cleaning entire pump without removing hoses or pump components from trailer. Digital tachometer/hourmeter installed.

Requires 12 Volt Battery: BCI Group 24, Minimum of 500 CCA (Cold Crank Amps) Battery Box Cables Setup for Automotive Post Type Connection.

Performance of Engine Driven Trash Pumps



6" Trash Pumps



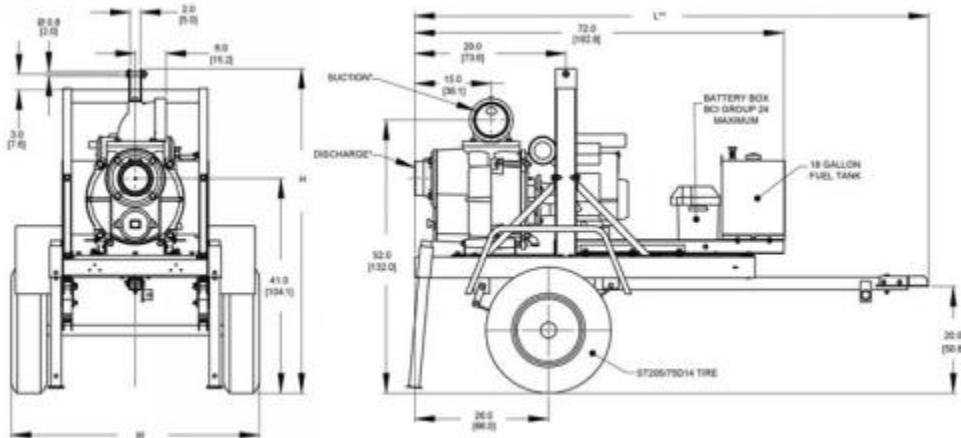
| Model | Driver | Base | Engine Type | Run Time (Hours) | Tank Size (Gal/Ltr.) | Ship Wt. (Lbs.) |
|----------------|--|---------|----------------------|------------------|----------------------|-----------------|
| 5585-H6 | Honda V-Twin OHV ⁺⁺⁺ ▲ | Trailer | 2 Cyl. Air Cooled | 9 | 20 / 75.7 | 1,000 |
| 5586-H6 | Honda V-Twin OHV ⁺⁺⁺ ▲ | Skid | 2 Cyl. Air Cooled | 9 | 20 / 75.7 | 725 |
| 5585-B6 | B & S Vanguard V-Twin ⁺⁺⁺ ▲ | Trailer | 2 Cyl. Air Cooled | 9 | 20 / 75.7 | 1,075 |
| 5586-Y6 | Yanmar 3TNM72 Diesel ⁺⁺⁺ ▲ | Skid | 3 Cyl. Liquid Cooled | 12 | 20 / 75.7 | 975 |
| 5587-Y6 | Yanmar 3TNM72 Diesel ⁺⁺⁺ ▲ | Trailer | 3 Cyl. Liquid Cooled | 12 | 20 / 75.7 | 1,250 |

Construction: Cast Aluminum with Cast Iron and Stainless Steel Components

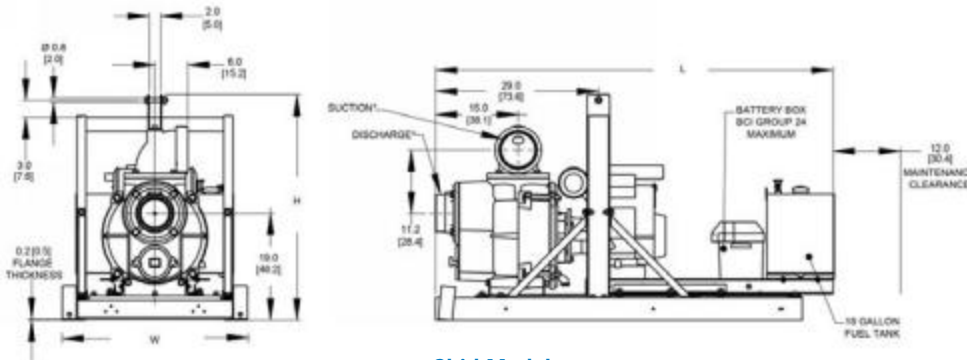
⁺⁺⁺ Electric Start, Requires 12V DC, BCI Group 24, MIN 500 CCA Battery (Battery Not Included)

▲ Oil Alert Included

Maximum Solids Handling Capacity: 3" Diameter



Trailer Model



Skid Model

| Model | HP Class ♦ | SUC* | DIS* | L | W | H |
|----------------|------------|------|------|--------------|--------------|--------------|
| 5585-H6 | 23 | 6 | 6 | 99.0 [251.4] | 48.0 [121.9] | 62.0 [157.4] |
| 5586-H6 | 23 | 6 | 6 | 71.0 [180.3] | 33.0 [83.8] | 40.0 [101.6] |
| 5585-B6 | 23 | 6 | 6 | 99.0 [251.4] | 48.0 [121.9] | 62.0 [157.4] |
| 5586-Y6 | 23 | 6 | 6 | 71.0 [180.3] | 33.0 [83.8] | 40.0 [101.6] |
| 5587-Y6 | 23 | 6 | 6 | 99.0 [251.4] | 48.0 [121.9] | 62.0 [157.4] |

♦ HP Class represents market category and is not intended to define actual horsepower.

* Standard NPT pipe thread.

NOTE: Dimensions are in inches (centimeters) and have a tolerance of ± 1/8".

Standard Features

- Cast Aluminum with Cast Iron and Stainless Steel Components for Long Lasting Durability
- Silicon Carbide/Viton® Mechanical Seal and Buna-N O-rings and Check Valve
- Built-in Check Valve for Fast Priming to 20 Feet
- Maximum Solids Handling 3"
- 6" NPT Port Size
- Delivers up to 1,000 GPM
- Digital Tachometer/ Hourmeter Installed
- Maximum Temperature 180° F
- 12 Volt DC Electric Start
- Available in Trailer or Skid Mounted
- D.O.T. Approved Trailer— Refer to Your State and Local Codes for Registration
- Easy Cleanout and Service Features with the Unique AMT Patented Slide Mechanism
- Steel Suction Strainer and Nipple Included
- Seal Wash Feature for Extended Seal Life