



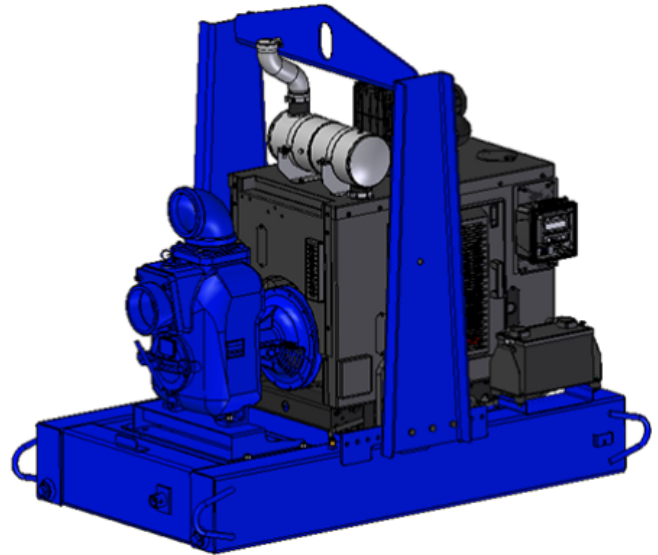
Self Priming Centrifugal Pump

Model 16D60-QSF2.8P FT4

Size 6" x 6"



| Total Head | | Capacity Of Pump In U.S. Gallons Per Minute (GPM) At Continuous Performance | | | | |
|---------------------|------|---|------------|------------|------------|-----------|
| P.S.I. | Feet | | | | | |
| 46.8 | 108 | 210 | 210 | 210 | 210 | 210 |
| 43.4 | 100 | 330 | 450 | 450 | 450 | 450 |
| 39.0 | 90 | 390 | 590 | 720 | 720 | 720 |
| 34.7 | 80 | 430 | 650 | 790 | 850 | 900 |
| 30.3 | 70 | 460 | 680 | 830 | 880 | 980 |
| 26.0 | 60 | 485 | 710 | 860 | 980 | 1045 |
| 21.7 | 50 | 510 | 725 | 980 | 1010 | 1080 |
| 17.3 | 40 | 530 | 750 | 910 | 1040 | 1120 |
| 13.0 | 30 | 550 | 760 | 930 | 1055 | 1140 |
| Suction Lift | | 25' | 20' | 15' | 10' | 5' |



PUMP SPECIFICATIONS

Size: 6" x 6" (152 mm x 152 mm) NPT - Female.

Casing: Gray Iron 30.

Maximum Operating Pressure 78 psi (538 kPa)*.

Semi-Open, Three Vane Impeller: Gray Iron 30.

Handles 2 5/8" (66,5 mm) Diameter Spherical Solids.

Impeller Shaft: Alloy Steel 4150.

Replaceable Wear Plate: Carbon Steel C1015.

Removable Cover Plate: Gray Iron 30. 22 lbs. (10 kg.).

Intermediate: Gray Iron 30.

Seal Plate: Gray Iron 30.

Seal: Type 31, Mechanical, Self-Lubricated. Silicon Carbide Rotating and Stationary Faces. Fluorocarbon Elastomers (DuPont Viton® or Equivalent). Stainless Steel 316 Cage and Spring. Maximum Temperature of Liquid Pumped, 160°F (71°C).*

Seal Sleeve: Alloy Steel 4130.

Flap Valve: Buna-N w/Nylon Reinforcement and Steel.

Radial Bearing: Open Single Row Ball.

Thrust Bearing: Open Double Row Ball.

Bearing Lubrication: SAE 30 Non-Detergent Oil.

Suction Flange: Gray Iron 30.

Gaskets: Cork, Vegetable Fiber and PTFE.

Hardware: Standard Plated Steel.

Standard Equipment: Hoisting Bail. 90° Discharge Elbow. Combination Skid Base w/Fuel Tank. Strainer. Oil Level Sight Gauge.

Optional Equipment: Battery. High Speed (55 MPH/89 KM/H) Single Axle Pneumatic-Tired Wheel Kit w/w/o DOT-Approved Lights and Electric Brakes. [Tandem Axle Over-the-Road Trailer](#).

*Consult Factory for Applications Exceeding Maximum Pressure and/or Temperature Indicated.



ENGINE SPECIFICATIONS

Model: Cummins QSF2.8.

EPA Tier: Final Tier 4.

Type: Four Cylinder, Four Cycle, Turbocharged, Charge Air Cooled, Liquid Cooled Diesel Engine.

Displacement: 173 Cu. In. (2,8 Liters).

Lubrication: Forced Circulation.

Air Cleaner: Dry Type.

Fuel Tank: 61 U.S. Gals. (231 Liters).

Full Load Operating Time: 31.7 Hrs.

Starter: 12V Electric.

Standard Features: Muffler w/Weather Cap.

Optional: Electronic Fuel Level Sensor.

Engine Control Features: Padlockable Box with Throttle Control, Tachometer, Coolant Temperature, Oil Pressure, Voltage and Overstart Indicators/Shutdowns. Manual/Stop Keyswitch. Fuel Level Display/Alarm/Shutdown (For Use With Optional Fuel Level Sensor).

CUMMINS PUBLISHED PERFORMANCE:

Maximum Gross Continuous BHP

74 (55 kW) @ 2500 RPM



GORMAN-RUPP PUMPS

To order, visit <http://pumpstoreusa.com/store/trashpumps> or call 515-223-4144

Specifications Subject to Change Without Notice

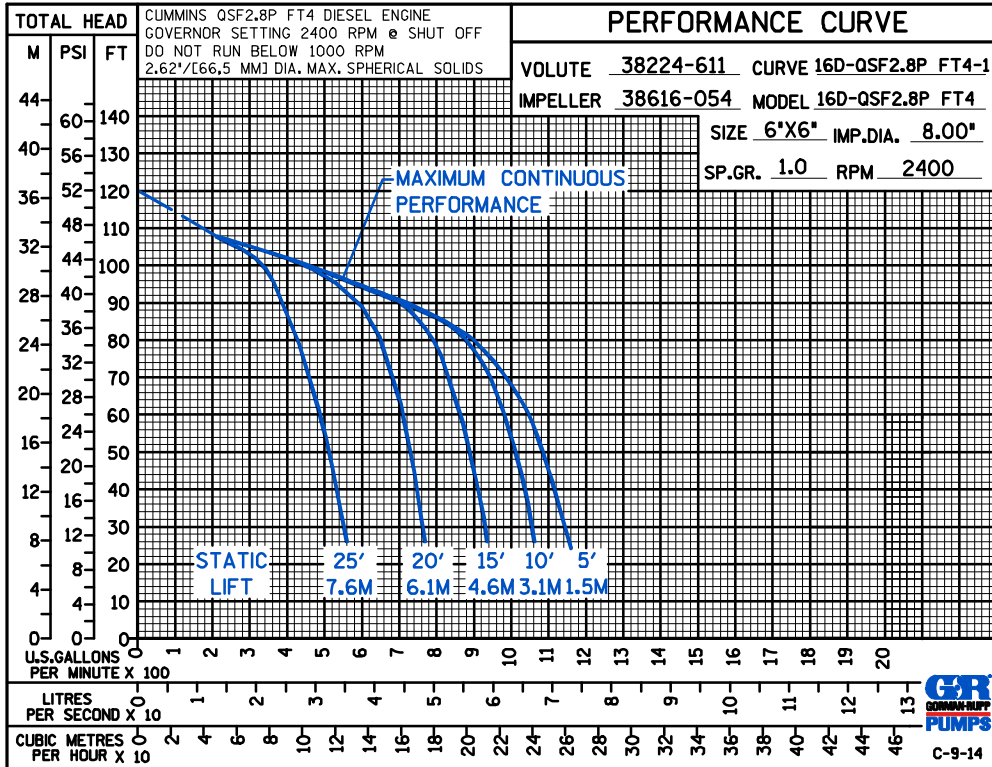
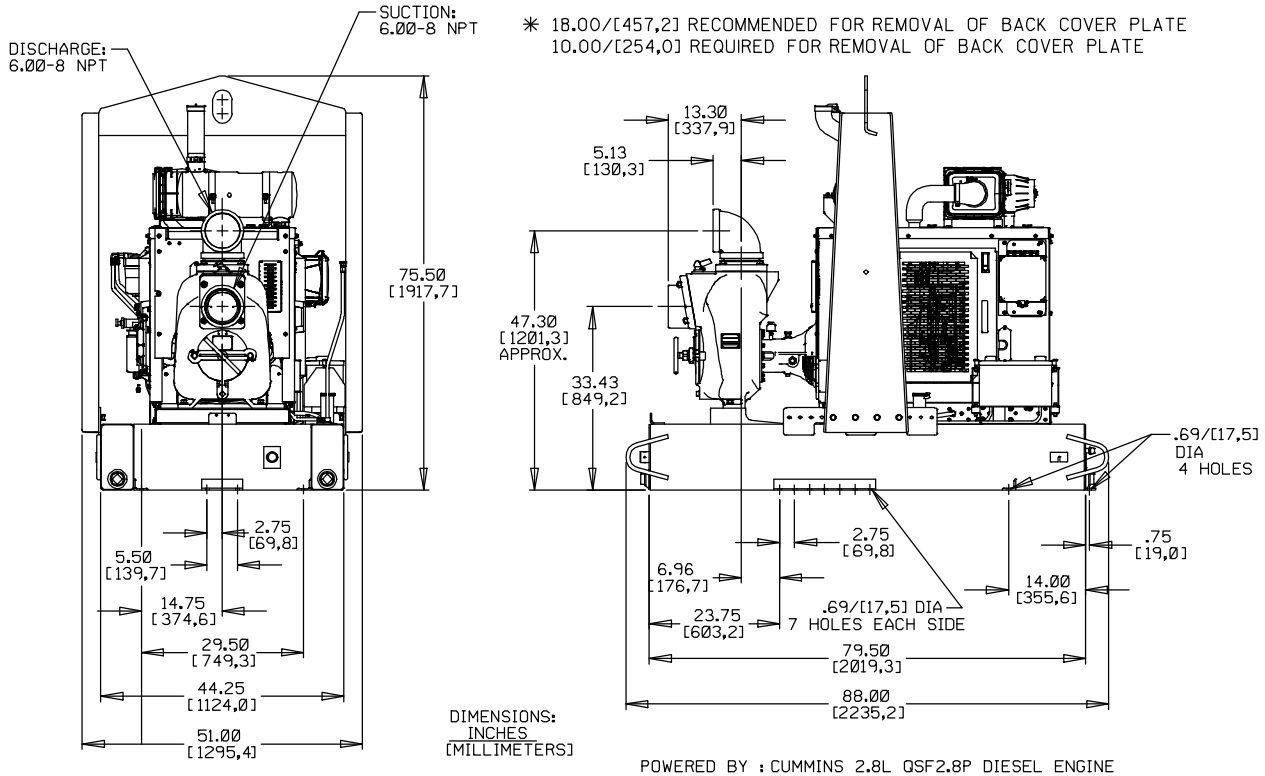
Printed in U.S.A.

Specification Data

APPROXIMATE DIMENSIONS and WEIGHTS

| | | |
|--------------------------|--------------------------|------------------------|
| | SKID BASE | 2-WHEEL |
| NET WEIGHT: | 2886 LBS. [1309,1 KG.] | 3246 LBS. [1472,4 KG.] |
| SHIPPING WEIGHTS: | 3186 LBS. [1445,1 KG.] | 3246 LBS. [1472,4 KG.] |
| EXPORT CRATE: | 253 CU. FT. [7,2 CU. M.] | |

SECTION 45, PAGE 1252



GORMAN-RUPP PUMPS

To order, visit <http://pumpstoreusa.com/store/trashpumps> or call 515-223-4144

Specifications Subject to Change Without Notice

Printed in U.S.A.