

ACEGU

Self Priming Centrifugal Pump



Gasoline Engine Driven

Models 82E-GX240 and 82E2-GX240

Size 2" x 2"



12M

Total Head		Capacity Of Pump In U.S. Gallons Per Minute (GPM) At Continuous Performance				
P.S.I.	Feet					
58.0	135	46	46	46	46	46
56.3	130	63	63	63	63	63
52.0	120	76	96	102	102	102
47.7	110	79	109	128	135	135
43.4	100	80	111	139	158	158
39.0	90	80	113	141	166	174
34.7	80	80	115	142	174	190
30.3	70	81	115	142	175	196
26.0	60	81	117	144	177	202
17.5	40	82	118	145	178	209
Suction Lift		25'	20'	15'	10'	5'



PUMP SPECIFICATIONS

- Size:** 2" x 2" (51 mm x 51 mm) NPT - Female.
- Pump Casing:** 82E-GX240 Aluminum Alloy 356-T6 w/Gray Iron No. 30 Cutwater Insert. 82E2-GX240 Gray Iron No. 30. Maximum Operating Pressure 94 psi (648 kPa).*
- Semi-Open Type, Four Vane Impeller:** Gray Iron No. 30. Handles 3/4" (19,0 mm) Diameter, Spherical Solids.
- Replaceable Wear Plate:** Carbon Steel No. 1026.
- Intermediate Bracket:** Gray Iron No. 30.
- Seal:** Double, Grease-Lubricated with Spring-Loaded Grease Cup. Sintered Bronze Stationary Seal Seats. Steel Rotating Faces. Neoprene Packing Rings. Maximum Temperature of Liquid Pumped, 110°F (43°C). Maximum Suction Pressure 10 psi (69 kPa).*
- Seal Liner:** Copper Alloy C26000.
- Flap Valve:** Buna-N w/Nylon Reinforcement, Gray Iron No. 30 and Sintered Steel.
- Flange:** 82E-GX240 Aluminum Alloy 356-T6. 82E2-GX240 Gray Iron No. 30.
- Gaskets:** Vegetable Fiber.
- Hardware:** Standard Plated Steel.
- Standard Equipment:** Roll Cage w/Rubber Feet. Strainer. Ductile Iron 90° Discharge Elbow.
- Optional Equipment:** Two Wheel Truck Assy with 2.75" x 10" (70 mm x 254 mm) Semi-Pneumatic Tires.

**Consult Factory for Applications Exceeding Maximum Pressure and/or Temperature Indicated.*

WARNING!

Do not use in explosive atmosphere or for pumping volatile flammable liquids.

ENGINE SPECIFICATIONS:

- Model:** Honda GX240
- Type:** Single Cylinder, Four Cycle, Air Cooled, Overhead Valve, Gasoline Engine.
- Displacement:** 14.8 Cu. In. (242 cc).
- Cylinder:** Aluminum Alloy w/Cast Iron Liner.
- Governor:** Mechanical.
- Lubrication:** Splash System.
- Air Cleaner:** Dry Type, Dual Element.
- Oil Reservoir:** 1.16 U.S. Qts. (1,1 Liters)
- Fuel Tank:** 1.6 U.S. Gallons (6,1 Liters)
- Full Load Operating Time:** 2.7 Hours.
- Starter:** Rope Rewind.

Standard Equipment: Muffler. Manual Throttle Control with Top Speed Limit. Manual Choke. "Oil Alert™" Low Oil Shut Down.

HONDA PUBLISHED PERFORMANCE:
Maximum Continuous B.H.P. 6.8 @ 3600 RPM



THE GORMAN-RUPP COMPANY • MANSFIELD, OHIO

GORMAN-RUPP OF CANADA LIMITED • ST. THOMAS, ONTARIO, CANADA

www.grpumps.com

Specifications Subject to Change Without Notice

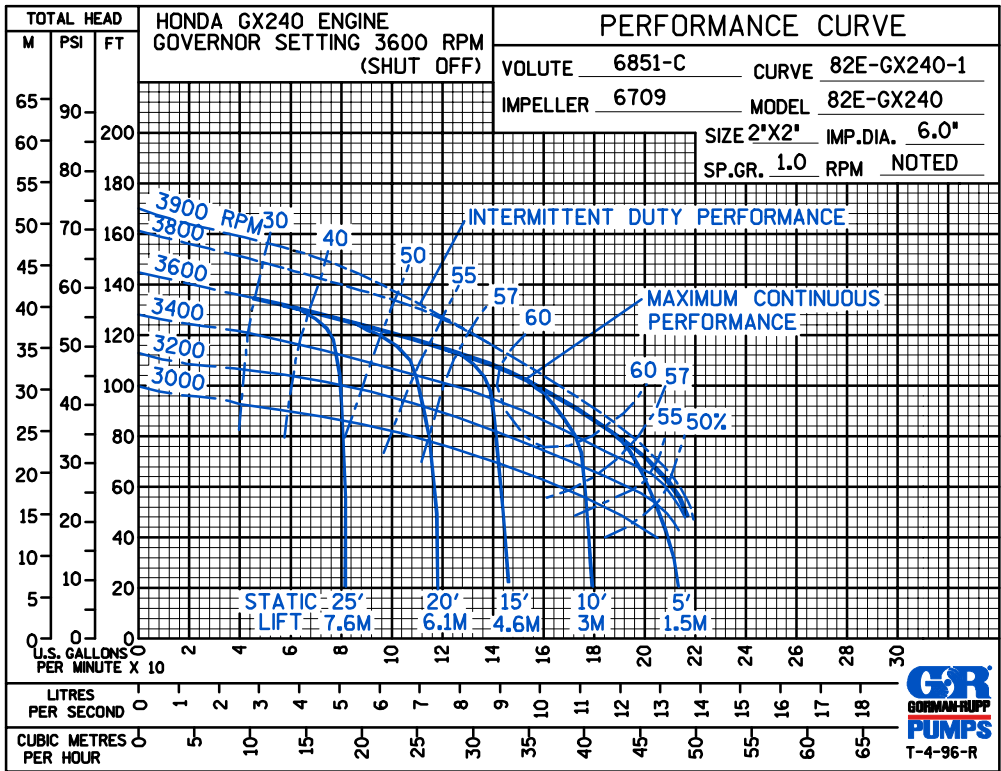
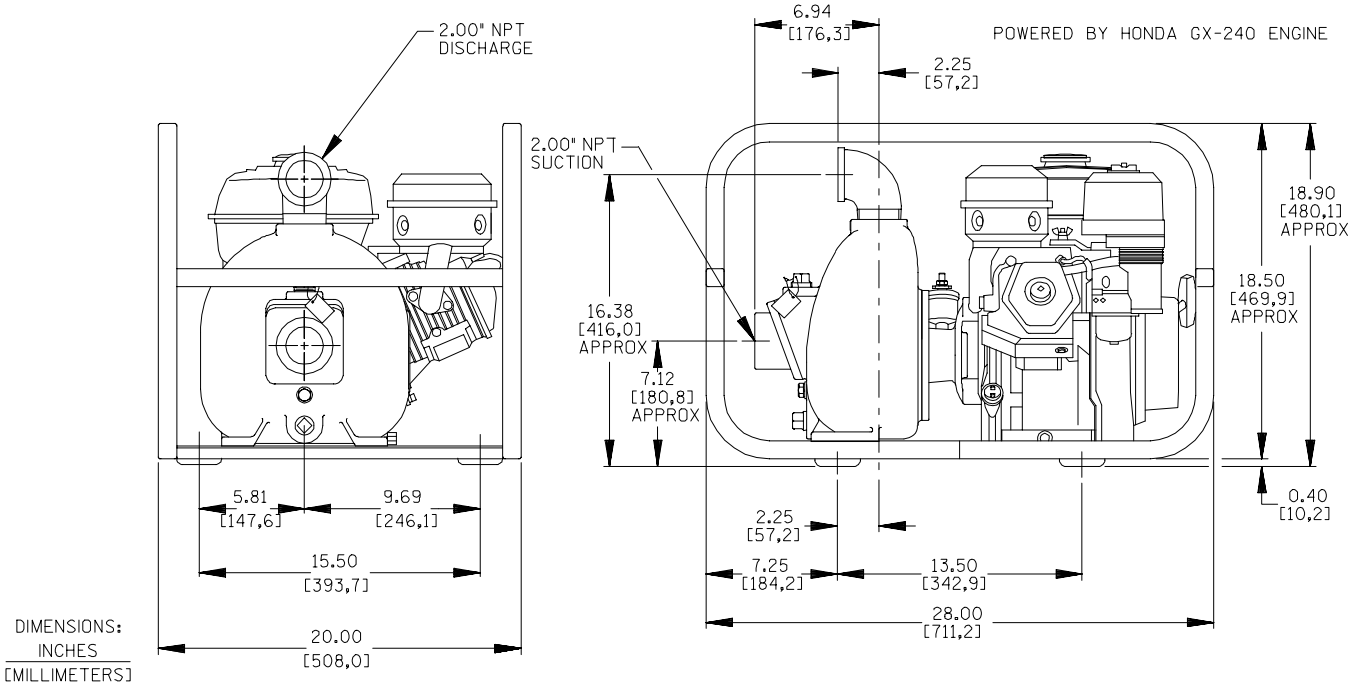
Printed in U.S.A.

Specification Data

SECTION 40, PAGE 670

APPROXIMATE DIMENSIONS and WEIGHTS

MODEL	82E	82E2
NET WEIGHT:	118 LBS. [54 KGS.]	148 LBS. [67 KGS.]
SHIPPING WEIGHT:	130 LBS. [59 KGS.]	160 LBS. [73 KGS.]
EXPORT CRATE SIZE:	7.0 CU. FT. [.20 CU. M.]	
WHEEL KIT ADD 25 LBS. (11,3 KGS.); CRATE (SEPARATE) 3 CU.FT. (0,1 CU. M.)		



THE GORMAN-RUPP COMPANY • MANSFIELD, OHIO

GORMAN-RUPP OF CANADA LIMITED • ST. THOMAS, ONTARIO, CANADA

Specifications Subject to Change Without Notice

Printed in U.S.A.